

D

C

B

A

3

2

1

PROPRIETARY AND CONFIDENTIAL

THE INFORMATION CONTAINED IN THIS DRAWING IS THE SOLE PROPERTY OF DYTRAN INSTRUMENTS INC. ANY REPRODUCTION IN PART OR AS A WHOLE WITHOUT THE WRITTEN PERMISSION OF DYTRAN INSTRUMENTS INC. IS PROHIBITED

DWG NO 127-3623A4T-XX

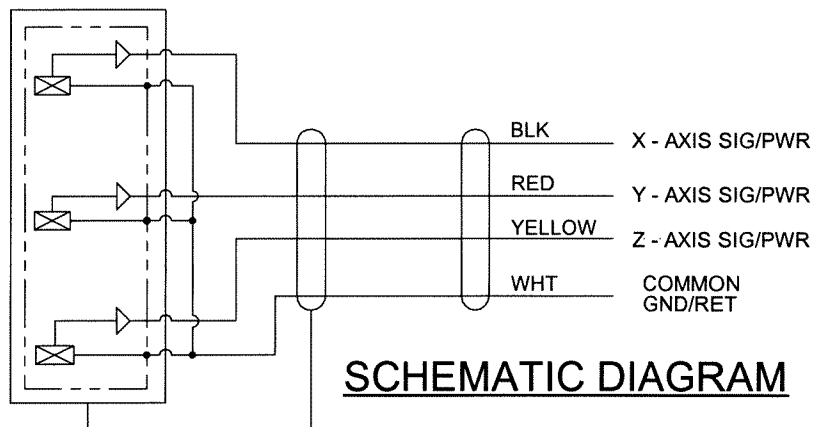
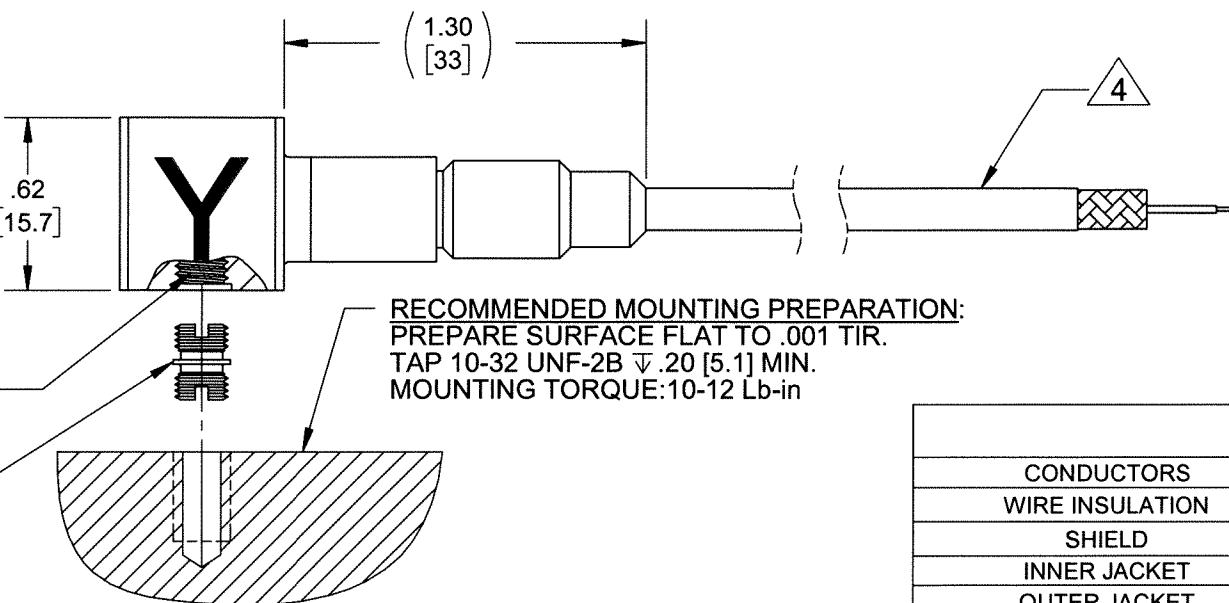
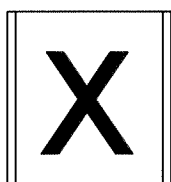
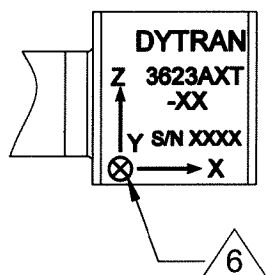
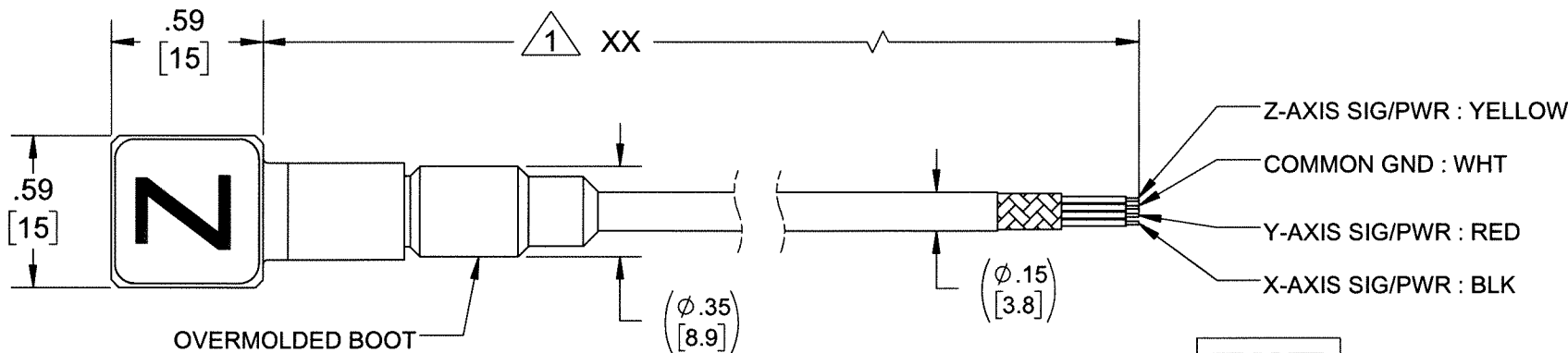
SH 1 REV A

REVISIONS

REV.	ECN	DESCRIPTION	BY/DATE	CHK	APPR
A	14970	INITIAL RELEASE	KG 09/17/19	AM	LW

1 CABLE LENGTH TOLERANCE	
≤1FT	+1/-0 IN
>1 FT - 5 FT	+2/-0 IN
> 5 FT - 10 FT	+4/-0 IN
>10 FT - 25FT	+6 / -0 IN
>25 FT	+5% / -0%

MODEL NO	SENSITIVITY
3623A4T-XX	10 mV/g
3623A5T-XX	50 mV/g
3623A6T-XX	100 mV/g



10-32 UNF-2B
TAPPED HOLE

RECOMMENDED MOUNTING PREPARATION:
PREPARE SURFACE FLAT TO .001 TIR.
TAP 10-32 UNF-2B ∇ .20 [5.1] MIN.
MOUNTING TORQUE:10-12 Lb-in

7. RATING: IP68, SUBMERSED TO 100 PSI.

6 ARROWS INDICATE DIRECTION OF ACCELERATION FOR POSITIVE OUTPUT

5 MOUNTING STUD, 10-32 TO 10-32, MODEL 6200, SUPPLIED.

4 CABLE, 4 CONDUCTOR, POLYURETHANE. SEE TABLE FOR SPECIFICATIONS.

3. WEIGHT: 18 GRAMS, MAX. (LESS CABLE).

2. TEMPERATURE RATING: -55°C TO +100°C.

1 PART NUMBER 3623AXT-XX. ("XX" DENOTES LENGTH IN FEET).

NOTES: UNLESS OTHERWISE SPECIFIED

4 4 CONDUCTOR, SHIELDED CABLE	
CONDUCTORS	28 AWG- 7/36 SILVER PLATED COPPER
WIRE INSULATION	PFA, .008 NOMINAL WALL
SHIELD	36 AWG SILVER PLATED COPPER BRAID, 90% COVERAGE, NOM
INNER JACKET	WHITE, TEFLON
OUTER JACKET	ORANGE, POLYURETHANE, ϕ .150 IN. [3.81mm] NOM.
TEMPERATURE RATING	-55°C TO +100°C
WEIGHT IN AIR	12 LB. / 1000 FT.
PRESSURE RATING	200 PSI [1.38 MPa] MAX.
VOLTAGE	600 VOLTS
MINIMUM BEND DIAMETER	6 IN. [152.4mm]

UNLESS OTHERWISE SPECIFIED:
INTERPRET DIM & TOL PER
ASME Y14.5M - 1994.
REMOVE BURRS.
COUNTERSINK INTERNAL THDS
90° TO MAJOR DIA.
CHAM EXT THDS 45° TO MINOR DIA.
THD LENGTHS AND DEPTHS ARE FOR
MIN FULL THDS.
DIMENSIONS APPLY AFTER FINISHING.

ALL MACHINED SURFACES: \checkmark
TOTAL RUNOUT WITHIN .005.
BREAK SHARP EDGES .005 TO .010.
MACHINED FILLET RADII .005 TO .015.
WELDING SYMBOLS PER AWS A2.4.
ABBREVIATIONS PER MIL-STD-12.

UNLESS OTHERWISE SPECIFIED:
DIMENSIONS ARE IN INCHES
DIMENSIONS IN BRACKETS [] ARE IN
MILLIMETERS TOLERANCES ARE:
DECIMALS METRIC ANGLES
XX \pm .03 X \pm 0.8 \pm 1°
.XXX \pm .010 .XX \pm 0.25

APPROVALS		DATE
ORIG	NDC	03/28/19
CHK	AM	09/17/19
APP	LW	11/17/19
DO NOT SCALE DRAWING		THIRD ANGLE PROJECTION USA



Chatsworth, CA

MASTER
ONLY IF IN RED

TITLE:
OUTLINE/INSTALLATION DRAWING,
3623A4T-XX SERIES

SIZE B	CAGE CODE 2W033	DWG NO 127-3623A4T-XX	REV A
-----------	--------------------	--------------------------	----------

SCALE: 3:2


SHEET 1 OF 1

4

3

2

1

Model Number 3623A5T-XX		PERFORMANCE SPECIFICATION				DOC NO. PS3623A5T-XX	
		TRIAXIAL IEPE ACCELEROMETER				REV A, ECN 14970, 08/27/19	
		<ul style="list-style-type: none">• GROUND ISOLATED• HERMETICALLY SEALED• STUD MOUNT• TEDS CAPABILITY• IP68 RATED, FULLY SUBMERSIBLE					
		ENGLISH		SI			
PHYSICAL							
Weight, Max. (Less cable)		0.6	oz	18	grams		
Mounting Provision		10-32 Stud Mount		10-32 Stud Mount			
Integral Cable [1]		Type	4x 28AWG, Water-blocked	4x 28AWG, Water-blocked			
Housing		Material	Titanium	Titanium			
Isolation		Material	Case Isolated	Case Isolated			
Sensing Element		Material	Single Crystal	Single Crystal			
		Element	Shear	Shear			
PERFORMANCE							
Sensitivity, ±5% [2]		50	mV/g	5.10	mV/m/s ²		
Acceleration Range, ±		100	Gpeak	981	m/s ² peak		
Frequency Range, ±5%		1.4 to 3000	Hz	1.4 to 3000	Hz		
±10%		0.9 to 4000	Hz	0.9 to 4000	Hz		
Resonance Frequency		> 15	kHz	> 15	kHz		
Linearity [3]		±1	% F.S.	±1	% F.S.		
Transverse Sensitivity, Max		6	%	6	%		
Noise floor		0.0002	Grms	0.002	m/s ² rms		
ELECTRICAL							
Supply Current Range [4]		2 to 20	mA	2 to 20	mA		
Compliance Voltage Range		+18 to +30	VDC	+18 to +30	VDC		
Output Impedance, Typ.		100	Ω	100	Ω		
Output Bias Voltage		+7 to +12	VDC	+7 to +12	VDC		
Discharge Time Constant		0.4 to 1.5	Sec	0.4 to 1.5	Sec		
Electrical Isolation		>100	MΩ	>100	MΩ		
ENVIRONMENTAL							
Maximum Shock, ±		1000	g pk	9810	m/s ²		
Maximum Vibration, ±		600	g pk	5886	m/s ²		
Operating Temperature		-67 to +212	°F	-55 to +100	°C		
TEDs Operating Temperature		-40 to +185	°F	-40 to +85	°C		
TEDs Feature [5]		IEEE 1451.4		IEEE 1451.4			
Base Strain Sensitivity		0.002	g/με	0.02	m/s ² /με		
Seal		Hermetic		Hermetic			
Maximum Ambient Pressure		100	psi	0.69	MPa		